



# GLASGOW NATURAL HISTORY SOCIETY NEWSLETTER

April 2016

Newsletter Editor  
David Palmar

Next Newsletter Deadline  
22 July 2016

GNHS is a Registered  
Scottish Charity

Website: [www.gnhs.org.uk/](http://www.gnhs.org.uk/)

## Jane Christie

## Margaret Stead

I was greatly saddened by the death of Jane Christie last month.

Just days before, she had been in her usual sparkling form, with brown eyes shining as she leant forward the better to enjoy her laugh. Jane was a very special person, highly intelligent and with a genuine interest and love of life. She was ever the naturalist, always willing to learn, but frequently able to inform. I remember the happy day when she had invited GNHS members to Gartlea to see the flowery meadow, this just one of many such occasions when she shared her knowledge and immediate environment with those whom she knew would appreciate it.

She loved reading and was ever ready to lend whichever new book had found particular favour. Lucky were her friends. Even those who were destined to a life within the confines of a care home could depend on her to continue to visit them. She had great self confidence, enabling her to approach strangers and make herself known to them while finding out about them in return. "I'm always talking" she would say apologetically and so she was, but she talked a lot of sense.

She will be sorely missed, not only by her large family who have benefited the most from her presence, but by her many friends who have gained so much in so many ways from her company. That her exit from this world was so gentle and so peaceful is a comfort to all who loved her and was no more than she deserved.



## Memorial Service for Eric Curtis

## Roger Downie

The life of Eric Curtis, formerly Curator of Glasgow Botanic Gardens and a past Editor of *The Glasgow Naturalist* will be celebrated in the University of Glasgow Chapel on Wednesday 11th May from 5.30pm. All are invited to attend. At that time of day, it is best to use public transport, because of parking problems on the University campus.

## 'TEK' Equipment

**Richard Weddle**

As we are within sight of the next field-recording season, it seems a good time to remind everyone that the Society possesses a number of items of equipment for the use of members. Many of these were purchased with the aid of a recent generous bequest from Thomas E Kinsey.

The list indicates that some items are 'in use' but which may available to others for a short time. However, there are also some items that have been purchased for particular research projects, and will not be available until the end of those projects. Items such as nets and sorting trays are sometimes needed for GNHS field excursions and other such events. GNHS Council do stipulate that requests to use items for any significant length of time should be supported by an outline of the project for which they are required, and that the results should be submitted for publication in *The Glasgow Naturalist*.

I should also point out that though the bat-detector is quite easy to use, it requires some training and experience to interpret what it picks up, and the Longworth traps can only legally be used by a trained and licensed operator.

<b>Description</b>	<b>Availability</b>	<b>In care of</b>
6 compound microscopes	occasional use	Hunterian Museum - Geoff Hancock
10 Longworth mammal traps	occasional use	Countryside Ranger Service
Batbox Duet bat detector	occasional use, often available	Richard Weddle
2 Garmin GPS (basic)	1 in use	Richard Weddle
2 Garmin eTrex GPS	1 in use	Richard Weddle
Skinner moth trap (mains operated)	In use	Joanne Dempster
Heath moth trap (battery operated)*	In use	Richard Weddle
2 pond nets: large / small	occasional use	Richard Weddle
2 sweep nets: large / small	occasional use	Richard Weddle
3 Butterfly nets	1 in frequent use	Richard Weddle
1 Beating-tray	occasional use	Richard Weddle
Emergence Traps (80) (for pupae etc.)	most available	Richard Weddle
3 sorting trays	occasional use	Richard Weddle
4 remote video cameras	available	Richard Weddle
camera traps (3)	enquire#	Stewart White
Torch (1million CP)	occasional use	Richard Weddle
Hanna 98129 pH/Conductivity/ Temperature Tester	available	Richard Weddle

\* there are additional Heath traps owned by Butterfly Conservation SW Scotland, which may be available for use by GNHS members.

# available by arrangement

If you'd like to borrow any item, contact me or I can put you in touch with the current holder of the equipment.

## Meeting snake researchers from 'across the pond' through *The Glasgow Naturalist* Chris McInerny

Following the publication of two articles describing European adder *Vipera berus* breeding biology in *The Glasgow Naturalist* (McInerny 2014a, McInerny 2014a), the author Chris McInerny was contacted by Professor Howard Reinert from The College of New Jersey, USA, who had found them through searching the internet. Howard, an expert on North American pitvipers (Reinert et al 2008, Reinert et al 2011, Bushar et al 2015), was planning to visit Scotland, and was keen to see adders. The main reason for his trip was to see his daughter, Laura Reinert, who was taking a semester at the University of Edinburgh. By chance, he was arriving in mid-March, the optimum time of the year to find snakes in Scotland, when they have just woken up from winter hibernation, and bask for long periods in the weak, early spring sun.



Chris McInerny and Professor Howard Reinert, Loch Lomond, March 2016

Howard, Laura and his wife Professor Laretta Bushar (an academic from Arcadia University, Pennsylvania, USA, also with interests in herpetology, and a co-author with Howard on many scientific papers on snakes) arranged to meet Chris near one of his reptile study sites on the shores of Loch Lomond, on 13 March. The



Howard enjoying an adder *Vipera berus*

rendezvous was successful and weather on the day promising for locating snakes, with little wind, high cloud and an air temperature of  $\sim 8^{\circ}\text{C}$ . These conditions mean that snakes do not warm up quickly when basking, allowing them retreat to cover, but instead bask for extended periods, exposed for much of the day, making them much easier to find. This proved to be case as Chris was able to show Howard, Laura and Laretta five magnificent male adders. Frogspawn was also seen, with much frog mating activity

observed.



A male adder *Vipera berus*, basking in early spring, Loch Lomond, March 2016

After a couple of hours enjoying the site and the snakes, taking a walk, and enjoying splendid views across Loch Lomond, Howard, Laura and Lairetta left to have a pub lunch, before returning to Edinburgh, via Flanders Moss.

From my perspective it was very enjoyable to meet a herpetologist from 'across the pond', and to be able to show them beautiful Loch Lomond and its wildlife. This rendezvous also demonstrates the importance of having a digital online version of the Society journal *The Glasgow Naturalist*, which can be viewed by people from around the world; and the power of internet search engines that allow like-minded folk to contact each other and share experiences.

## References

- Bushar LM, Bhatt N, Dunlop MC, Schocklin C, Malloy MA and Reinert HK (2015) Population isolation and genetic subdivision of timber rattlesnakes (*Crotalus horridus*) in the New Jersey Pine Barrens. *Herpetologica* 71, 203-211.
- McInerny CJ (2014a) Observations on a population of adders, slow-worms and common lizards on Loch Lomondside, Scotland. *The Glasgow Naturalist* 26(1), 63-68.
- McInerny CJ (2014b) Habitat preferences of European adders at Loch Lomond, Scotland. *The Glasgow Naturalist* 26(1), 69-74.
- Reinert HK, Bushar LM, Rocco GL and Odum RA (2008) Ecology of the Aruba Island rattlesnake, *Crotalus durissus unicolor*. Pp. 335-352 in Hayes WK, Beaman KR, Cardwell MD and Bush SP (Eds.) *The Biology of Rattlesnakes*. Loma Linda University Press, Loma Linda, California, USA.
- Reinert HK, Munroe WF, Brennan CE, Rach MN, Pelesky S and Bushar LM (2011) Response of timber rattlesnakes to commercial logging operations. *Journal of Wildlife Management* 75, 19-29. DOI: 10.1002/jwmg.35

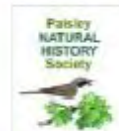
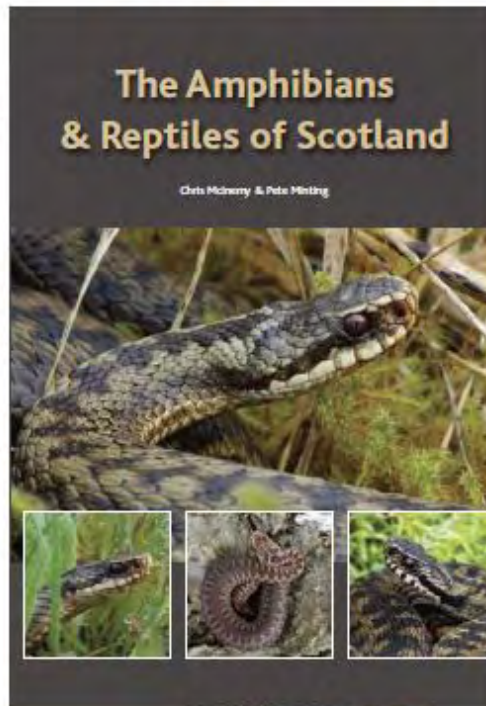
## Winter Programme 2016-17

Roger Downie would like any suggestions for the winter programme 2016-17, which is being drawn up at the moment. Please provide the name and if possible email address of any potential speaker to [Roger.Downie@glasgow.ac.uk](mailto:Roger.Downie@glasgow.ac.uk)



UNIVERSITY  
of  
GLASGOW

# amphibian and reptile conservation



Clyde Ecology Ltd



By  
**Chris McInerny and Pete Minting**

guest authors  
David O'Brien  
Chris Cathrine  
maps  
Ian Andrews

## Registration for subscription of hard copy

To be published in spring 2016 in two formats:

- 1) Free downloadable pdf from sponsors' websites
- 2) Subscription hard copy (about £15, cost price)

To register and reserve a hard copy, which will cost about £15, please email Pete Minting at:

[pete.minting@arc-trust.org](mailto:pete.minting@arc-trust.org)

We will include you on a subscription list and confirm order and cost on publication.

## **2016 Meetings – In the GU Boyd Orr Building unless otherwise stated**

### **April**

#### **Tuesday 12th**

**6.30pm** Lecture: Glasgow's biodiversity: it's second nature; Dave Garner.

**7.30pm** Lecture: The state of the apes; Liz Williamson.

### **May**

#### **Tuesday 10th**

**6.30pm** Tutorial: Scottish ants; Jeanne Robinson.

**7.30pm** Lecture: Scotland's deep seas and their future in a changing ocean; Murray Roberts (Jointly with Hamilton NHS and Paisley NHS).

### **June**

#### **Tuesday 14th**

**6.30 for 7pm - Summer Social:** see back page for details and booking form.

### **Hurlethill Bioblitz**

**Sarah-Jayne Forster**

Glasgow Countryside Rangers with RSPB have arranged a Bioblitz at Hurlethill, a site designated as a SINC (Site of Importance for Nature Conservation) by Glasgow City Council. It takes place from 10.30am on Thursday 12th May 2016. Meet at the far west corner of Faskin Road (NS 516612). This is accessed via Kinarvie Rd (off the south end of Crookston Road, just before it meets Barrhead Road). There is limited parking as it's a housing estate but we can provide a minibus for those who don't have transport or know how to get there. The meeting point for the minibus will be Pollok Country Park, Riverside car park at 10am.

A gazebo kindly supplied by RSPB will be erected on the day. Equipment and Refreshments will be provided by Glasgow City Council; the event is weather dependent.

There are no toilets on site but there is a pub with toilets within easy walking distance - The Hurlet - on the opposite side of the A726 Paisley to E Kilbride Road.

**General Correspondence to the General Secretary:** Mary Child

**Next Newsletter - copy to David Palmar by 22nd July 2016 please.  
email:**

Contributions by members are particularly welcomed. Please send preferably by email, as .rtf, .doc or .docx (Word 2007) format. If you have time, please italicise taxonomic names, and use Verdana font, size 12 points.

Photos are welcome, especially if they illustrate an aspect of the work of GNHS, e.g. if taken on one of our excursions. If sending photos, please send separate jpgs under 100Kb each (**not** embedded in a Word file or a .pdf please).

## **Summer Excursion Programme 2016 – Additional Information Alison Moss**

### **May**

**Sun 15th, 11am, Cambusnethan Woods LNR** – mixed interest, spring flowers and insects especially noted for bluebells, local and woodland history. Meet at Garrion Bridges Garden Centre. Take M74 to Junction 7, Larkhall. At roundabout, take road to Lanark. Follow to old Bridge, turn left onto Overtown-Waterloo road, Garden Centre is 400 m north on right. Meet near door into garden centre. (Garrion Bridges Garden Centre, Horsley Brae, Overtown, Wishaw ML2 0RR 01968 372288)). Toilets and refreshments available here.

We will follow paths from Centre to Woodlands through to Cambusnethan House (ruin) and Mausoleum. Bring snack or packed lunch. Sensible shoes or boots. Contact Alison Moss.

**Thu 19th, 7pm, Glasgow Botanic Gardens.** Mainly trees. Meet at entrance to the Kibble Palace, NS569675. Contact Bob Gray.

**Sun 29th, 10.30am** for guided walk starting at 11am, **RSPB Reserve Loch Lomond.** Led by Reserve ranger, Paula Baker. Mixed interest, breeding birds, wild flowers, insects. No new footpaths, likely to be soggy. Wellies may be best. Bring packed lunch. Port-a-loo available at car park. Car park NS437871. From Drymen, A811, pass Old Schoolhouse, B&B on right. Entrance to RSPB Reserve is the next on right (no signage). If pass Drumakill, you've gone too far. From Balloch, A811, through Gartocharn, look for War Memorial and Drumakill on left. Take next turn on left. Follow the access track down the hill, the visitor car park is on the left. Note – postcode does not work for sat. nav. Contact Alison Moss

### **June**

**Sat 11th, 10am, RSPB Lochwinnoch Bioblitz.** Reserve covers 159 ha of mixed habitats. Experts and volunteers will be out on reserve all day, but our expertise welcomed. Paths are often muddy. Meet at RSPB Nature Reserve, Largs Road, Lochwinnoch, PA12 4JF (01505 842 663). From M8, take A737. At roundabout beyond Howwood turnoff, turn right onto A760, road to Lochwinnoch, Largs. Reserve entrance is about 500yds from roundabout, on right. Contact Norman Storie.

**Tues 14th, 6.30 for 7.00, Summer Social, Cathedral House Hotel, 28-32 Cathedral Square, Glasgow G4 0XA.** Cost £25. A pre-dinner guided walk round the Necropolis starts at 5pm. Details and booking form at end of the Newsletter. Contact Mary Child.

**Fri 17th-Sun 19th, Trossachs weekend.** Explore latest extensions of native woodland at Loch Katrine - Glen Finglas - Inversnaid. Representatives from Forestry Commission, RSPB, and SNH will assist Bob Gray. Contact and further details, Bob Gray.

**Tues 28th, 7.15pm, Mystery Meander.** Mixed interest by River Clyde. Meet at Morrisons car park, Cambuslang. Take A724 from Glasgow (Glasgow Road – becomes Main Street). Turn down Bridge Street – A763. Car park off Bridge Street. Contact John Lyth,

## July

**Sun 3rd, 11am , Overtoun House and Glen.** Mixed interest, botanical and insects. Meet at Overtoun House. From Glasgow take A82 going west. At Milton turn right up Milton Brae. Go up hill for approx. 1 mile, then enter Overtoun House grounds. Meet in car park NS425761. Bring packed lunch and/or café at Overtoun House. Paths, but wear strong footwear. Contact James Milner-White.

**Thu 7th, 7pm, Kelvingrove Park,** west of River Kelvin. Mainly trees. Meet at the North end of Kelvin Way NS571667 near the junction with University Avenue. Contact Bob Gray.

**Sun 10th, 10.30am, Red Kites at Argaty.** Red kites and guided walk including wild flower meadow and dragonfly pond. Meet at car park, Lerrocks Farm Cottages, Argaty, Doune, FK16 6EJ. Follow M9 North to Junction 11. Go straight through roundabout onto A9. Take first exit left to Doune (A820). After 1 km you should see a brown sign for 'Argaty Red Kites' pointing to road on right. Follow this road till reach Lerrocks Farm car park. Walking boots (one steepish section), waterproofs, midge repellent and packed lunch. Cost £20 maximum depending on numbers. Contact George Paterson.

**Thurs 21st, 7pm, Cuningar Loop.** Guided walk by Community Ranger, Eilidh Malcolm. A follow-up from a recent lecture – development of natural history, recreation and community involvement. The current access point is off Downiebrae Road (which is off Dalmarnock Road) NS618 626 and closest post code G73 1PW. Park on Downiebrae Road or if busy Dalmarnock Tesco. Contact Mary Child.

## August

**Sun 7th, 11am, Dundonald Links, Gales Marsh.** Lead by Gill Smart. Mixed interest – invertebrates of sandy habitats, especially moths (traps will be set up by Gill), very varied botanical habitats. Meet at Gales Marsh Reserve NS3231 3597. Leave A78 at Newhouse roundabout. Take the exit signposted Irvine. Go straight ahead at next roundabout onto Marine Drive. Pass the Gales Hotel and take the next left, signposted Western Gales. Gales Marsh is on the left immediately after the junction. Park on the grass beside the short lane. Contact George Paterson.

**Sun 21st, 11am, Baron's Haugh, Dalzell Estate.** RSPB Reserve with several hides, also botanical, mammal (including otters). Good paths, but damage from flooding near the Clyde and may be muddy. Meet at Baron's Haugh car park, NS 756 553, ML1 2TZ. Take M74 to Junction 6. Take road to Motherwell. Bear right at next traffic lights sign posted to Wishaw. Turn right at 3rd mini-roundabout and follow the road to the junction, turn left then immediately right to enter the reserve. The car park is on the right. Bring packed lunch. No toilets, but Strathclyde Country Park is half a mile away with refreshments and toilets. Contact Alison Moss.

## September

**Sun 4th, 11am, Neilston** LevernWater/Crofthead Mill, Cowden hall, Midge Hole Glen. Mixed interest – plants, trees, insect, spiders, mosses. Meet at Leisure Centre/ Library car park in the centre of Neilston. Packed lunch and/or the Dancing Goat Café. Contact, James Milner-White.

**Sun 18th, 9am-11am - Reptiles at East Loch Lomond.** A field excursion led by Chris McInerny to see reptiles on the east shore of Loch Lomond. Meet at Cashel Reserve car park, NS399940. Cashel is clearly marked on right approx. 4 miles beyond Balmaha on B837. Bring sturdy walking shoes, boots or wellies and packed lunch. Contact George Paterson.

### **Joint meetings with Clyde and Argyll Fungus Group**

There will be at least 2 joint meetings, September/ October/November. CAFG have still to finalise their programme and also, changes are occasionally made to fit unusual weather patterns which affect finding fungi. Check next Newsletter and reminders nearer the time for details.

### **2016 AGM and Changes to GNHS Council**

**David Palmar**

The 2016 AGM was well attended and reports were given about a very full and successful year for the Society, including the PhotoSCENE photographic competition, indoor meetings and excursions. Thanks to the organisers of these. Chris McInerny and Ann Ainsworth were elected as councillors, and Tony Payne as the new Vice President in place of Alison Moss.

President Roger Downie thanked the Council and Vice Presidents for their support. As well as mentioning this sad year for the deaths of prominent members (covered in Newsletters and in *The Glasgow Naturalist*), he noted the centring of the Summer Social last year around John Mitchell's 50th publication in *The Glasgow Naturalist*, and the success of the joint meetings with Hamilton and Paisley Naturalists, the Tree Lovers and the Friends of the Botanic Gardens. The Kelvin Biodiversity Network Conference and the BLB lecture by Pat Monaghan were highlights of the year. The Blodwen Lloyd Binns bequest continued to fund many student projects.

### **Atlas of Living Scotland**

**Richard Weddle**

The Scottish Biodiversity Information Forum (SBIF) project has made tangible progress in the form of a website called Atlas of Living Scotland (ALS) [www.als.scot](http://www.als.scot) which describes itself as 'your gateway to learning about Scotland's natural world'; although currently it holds relatively little distribution information – for the time being it is best to continue to use the National Biodiversity Network (NBN) Gateway <https://data.nbn.org.uk> for distribution maps.

You may also like to explore the links on the ALS webpage, particularly 'Scotland's Environment Web' which has links to information about the environment generally.

We have heard that the SBIF Executive Group intend:

- 1) that SBIF and NBN are united so that there is a single body governing the biodiversity data infrastructure and the Data Flow Pathway. To honour the original Public Petition which brought SBIF into existence, it is proposed that the SBIF Steering Group continues as an Advisory Group to the NBN in Scotland (to be known as the SBIF Advisory Group) to support and facilitate the NBN and the Data Flow Pathway.

- 2) that the SBIF Coordinator role held by Christine Johnston is transferred to be managed and hosted directly by the NBN to act as their Scottish Liaison Officer thereby maximising the capacity of the NBN in Scotland.
- 3) that, following implementation of Recommendations 1 and 2, the SBIF Advisory Group should focus on two matters:
  - driving a review and redesign of the Local Environmental Record Centre (LERC) and recording group network with a view to realigning the network (subject to stakeholder consultation).
  - facilitating the Data Flow Pathway in Scotland so that the biodiversity infrastructure we envisage is highly effective.

This is all welcome progress which should link the various sources of bio-records more effectively and, in the local context, establish the existing Glasgow Museums Biological Records Centre more securely.

### The Girdled Snail *Hygromia cinctella* in Scotland

**Adrian Sumner**

The Girdled Snail, *Hygromia cinctella*, is a Mediterranean species that was first reported in Britain in 1950. Comfort (1950) found this snail at two localities in Paignton, Devon, on cultivated ground with exotic plants. In fact, *H. cinctella* turned out to have been in the area since at least 1945 (Milman, 1951), and Comfort (1951) found it was widely distributed around Paignton. For many years *H. cinctella* was restricted to South Devon, but in the 1980s and 1990s it began to expand its range, moving north and eastwards, as well as westwards into Cornwall. By 2006, it had reached Leeds, in Yorkshire (Norris, 2006). It then made a great leap northwards, turning up in Glasgow in 2008, where Richard Weddle found it in Partickhill, on the west side of the city (grid ref. NS553671) (Weddle, 2009). A single specimen of *H. cinctella* was found among several collected from Japanese Knotweed. This remained the only Scottish record for a few years, until I found Girdled Snails in Livingston, West Lothian (NT036683); Edinburgh (NT228738); and St Andrews, Fife (NO516612), in 2012. Subsequent records have been from Uddingston (NS688607), on the south side of Glasgow, in 2014, and from Dunbar, East Lothian (NT678774), in 2015. This species is now well established at many

sites in the City of Edinburgh.



Fig. 1. Two specimens of *Hygromia cinctella* from St Andrews, showing the typical shell colour and shape.

Comfort (1950) originally described *Hygromia cinctella* as “. . . conical, reddish brown or horn coloured with sharp peripheral keel, with a thin opaque white band coincident with the keel”.

This is a pretty clear description of this species, but as will be seen, it needs

some qualification. He later added that some adults reach a diameter of almost 20 mm (Comfort, 1951), but the largest one I have found in Scotland is only

11.3 mm in diameter, and most are under 10 mm. The conical appearance of the upper side of the shell, the sharp peripheral keel, and the rounded underside, are characteristic of this species. The colour of the shells and animals is variable. The specimens I found at St Andrews conform very well to Comfort's description (Fig. 1); the shade of brown is quite distinctive, and I cannot think of any other snail that is quite the same colour. However, most of the Girdled Snails I've found in Scotland have thinner shells, with the body colour tending to show through; they are either dark brown (Fig. 2), or whitish (Fig. 3). In my experience, dark-shelled snails also have dark bodies, and pale-shelled individuals have pale bodies. Whether this correlation is universal remains to be seen. As can be seen from Figs 2 and 3, the whitish peripheral band is not always continuous, and does not always extend to the mouth of the shell. Some specimens have very fragile shells, even so thin that they crumble when picked up; Girdled Snails may be very sensitive to a lack of lime in many parts of Scotland, and this might restrict their potential distribution.



Fig 2. Dark-shelled specimen of *Hygromia cinctella* from Edinburgh, with a dark body.



Fig. 3. Pale-shelled specimen of *Hygromia cinctella* from Edinburgh, with a pale body.

The only species that *Hygromia cinctella* might possibly be confused with is the Strawberry Snail *Trochulus striolatus*, which lives in the same sort of habitats. *T. striolatus* has a shouldered shell, often more obvious in juveniles, but never an actual keel, and it has quite a large umbilicus; the umbilicus in *H. cinctella* is small, and largely covered over by the edge of the shell so that it is not really visible (Fig. 4). *T. striolatus* often has a faint peripheral band on the shell, but this is never as sharply defined as that on *H. cinctella*.

Fig. 4. Comparison of *Hygromia cinctella* (left) and *Trochulus striolatus* (right). Top: frontal views, showing the keeled shape of *H. cinctella* compared with the rounded, shouldered outline *T. striolatus*. Bottom: the umbilicus of the two species, almost closed in *H. cinctella*, and large and open in *T. striolatus*.



Where does the Girdled Snail live? All the sites where I have found *H. cinctella* so far have been ruderal; in Edinburgh it favours rough vegetation beside the old railway lines, now cycle paths and footpaths, that criss-cross the city, but anywhere in a built-up area with, for example, nettles and similar vegetation seems to be suitable. The sites at Livingston and Dunbar were both just outside garden fences, suggesting that the snails may have originated in gardens. This was especially obvious at Dunbar, where the snails were just outside the back garden fences of some newly built houses, and associated with discarded pots and plant trays. *H. cinctella* also climbs walls, and can be found underneath boards lying on the ground, as at St. Andrews.

It will be interesting to follow the spread of the Girdled Snail in Scotland, to see if it is restricted to areas relatively rich in lime (like many built-up areas), or whether it can establish itself anywhere. Although the Girdled Snail has become established in Edinburgh, why has there been only one record of it in the Glasgow area since 2008? Has it failed to establish itself there, or is it simply that it hasn't been searched for thoroughly? So far, with the exception of the St Andrews record, all the finds have been in the Central Belt, but this could just be observational bias; if *H. cinctella* has been brought to Edinburgh and Glasgow, there seems to be no reason why it should not be introduced into other towns and cities in Scotland. The rapid spread of this snail northwards through England, and now into Scotland, could almost certainly only have happened with, no doubt unwitting, human assistance; sites with newly established gardens, where plants have been brought in from elsewhere, should be particularly profitable when looking for this snail.

Identification of *Hygromia cinctella* is really quite straightforward, but if you have any doubts, please do not hesitate to contact me (though I cannot promise a prompt answer during the season – I might be out looking for snails, too!). Two or three photos from different angles should be sufficient.

## References

- Comfort, A. (1950) *Hygromia cinctella* (Draparnaud) in England. *Journal of Conchology* 23: 99–100.
- Comfort, A. (1951) Distribution of *Hygromia cinctella* (Draparnaud) at Paignton. *Journal of Conchology* 23: 136.
- Milman, P.P. (1951) *Hygromia cinctella* (Draparnaud) at Paignton. *Journal of Conchology* 23: 135.
- Norris, A. (2006) *Hygromia cinctella* (Draparnaud, 1801) in Yorkshire. *Mollusc World*, No. 12, p 21.
- Weddle, R. (2009) The Girdled Snail *Hygromia cinctella* (Gastropoda: Pulmonata: Hygromiidae): first Scottish record. *The Glasgow Naturalist* 25(2): 67

**Excursion Report  
Garscadden Burn Park, 2nd July 2015**

**Bob Gray**

Seven of us gathered near the entrance to the Donald Dewar Leisure Centre in the southwest corner of this 26 ha park. The estate, owned by the Fleming family, was part of the ancient barony of Garscadden established in the 14th Century. The house was built originally in 1664 by William Colquhoun who had taken over the estate and was extended in the 18th Century when the "Girnin Gates", the south entrance no longer existing, were constructed by the Paisley architect, Charles Ross.



In the 18th Century John Campbell Colquhoun lived between here and Chartwell in Kent (sold to Winston Churchill in 1923). The Garscadden lairds were great tree planters. One tree felled since 2000 had 140 rings. The house and policies were bought by Glasgow Corporation partly before and partly after the war in order to build Drumchapel housing scheme. The house was destroyed by arson in 1959. Linkwood Crescent was built on the site of the house; three tower blocks were built on the policies (1) and the gardens were incorporated into Garscadden Burn Park.



We followed a roughly figure of eight route with Garscadden Burn at the centre of the 8, starting at the west end of the park and heading eastwards. The park consists of a broad, shallow valley with much rough grassland and scrub towards the east end. Four habitat types can be recognised: open water (the burn), wetland, heathland and woodland. The park includes a SINC – site of interest for nature conservation – which occupies 2.5 ha. straddling the burn. This is one of 10 in the northwest of the city (which has 46 in total). The burn contains a healthy population of water voles.



Where it is prone to flooding particularly towards the centre we found three Glasgow rarities: wood club-rush (*Scirpus sylvaticus*), lesser pond-sedge (*Carex*

*acutiformis*) (2) and greater tussock-sedge (*C. paniculata*) (3). Farther east, on the ground sloping towards the south side of the burn, we encountered swathes of northern marsh-orchids (*Dactylorhiza purpurella*) and occasional common spotted-orchid (*D. fuchsii*). On a small area of heath, towards the east end where the soil is more shallow, sandy, better drained and slightly acidic, grow bilberry (*Vaccinium myrtillus*), heather (*Calluna vulgaris*), gorse (*Ulex europaeus*) and broom (*Cytisus scoparius*).



The woodland can be divided into the planted, younger south-eastern end and the more natural and older



western end, the latter being derived from remnants of the original plantings of the Garscadden lairds. The former consists mainly of silver birch and some willows but, being light demanders, they are being slowly overgrown chiefly by pedunculate oak (*Quercus robur*) and occasional sycamore (*Acer pseudoplatanus*), hazel (*Corylus avellana*) and gean (*Prunus avium*). The woodland margin is made up of a few Norway maple (*Acer platanoides*) and ash (*Fraxinus excelsior*) and many blackthorn (*Prunus spinosa*), hawthorn (*Crataegus monogyna*), elder (*Sambucus nigra*) and the occasional Scots pine (*Pinus sylvestris*). In places the ground has been furrowed with the planting carried out on ridges. Within a clearing containing a badger sett regeneration of ash, gean and hazel occurs. The latter woodland contains a wide variety of different species. The biggest of these comprise a pedunculate oak, at 370 cm girth, one of the biggest in Glasgow after Linn Park and Castlemilk and a sycamore (4), at 418 cm girth, maybe fourth in the city after Auchinlea, King's and Linn Park. The bigger oaks are concentrated higher up, where the soil is better drained, on the south side at the western end whilst the big sycamores occur high up on the north side. Some sizeable limes (*Tilia x europaea*) grow along both northern and southern boundaries.

In the damper, lower locations are found many willows such as osiers (*Salix viminalis*), white (*S. alba*) and crack willows (*S. fragilis*) and, towards the west end, grows a wet woodland with alders (*Alnus glutinosa*) and crack willows growing over rich fern and swamp vegetation (5). Before leaving the trees reference must be made to the conspicuous silver maples (*A. saccharinum*) and a purple Norway maple ('Goldsworthy Purple') growing halfway along the northern boundary. Hidden away in the southwest corner, occur a number of planted aliens such as Sitka spruce (*Picea sitchensis*) and Japanese larch (*Larix kaempferi*) and, in the understorey, some Oregon grape (*Mahonia aquifolium*) and narrow-leaved barberry (*Berberis x stenophylla*). Amongst lower organisms Roger Griffith drew our attention to some blackthorn fruit infected by the bladder bullace fungus (*Taphrina*

*pruni*). Finding the elm leaf aphid (*Eriosoma ulmi*) near the southwest entrance completed our evening.

## **The Ocean Cleanup**

**from June McKay edited by David Palmar**

Plastic in our oceans is a huge issue but there is too little space here to do it justice. If this concerns you, have a look at the following links:

16-year old Boyan Slat is testing his invention called the Ocean Cleanup Array, to allow ocean currents to bring plastic into a barrier from which the plastic can be removed.

<http://www.theoceancleanup.com/>

By 2050, there will be more plastic than fish in the world's oceans, study says (Washington Post)

<https://www.washingtonpost.com/news/morning-mix/wp/2016/01/20/by-2050-there-will-be-more-plastic-than-fish-in-the-worlds-oceans-study-says/>

Can the 'largest cleanup in history' save the ocean? (Washington Post)

<https://www.washingtonpost.com/news/inspired-life/wp/2016/02/01/can-the-largest-cleanup-in-history-save-the-ocean/>

Plastic oceans: What do we know? (BBC)

<http://www.bbc.com/news/science-environment-34414710>

Full scale of plastic in the world's oceans revealed for first time (The Guardian)

<http://www.theguardian.com/environment/2014/dec/10/full-scale-plastic-worlds-oceans-revealed-first-time-pollution>

## **Giving Nature a Home in Glasgow**

## **Summer 2016 RSPB Events**

All events are held at Kelvingrove Art Gallery and Museum

### **30 April, 1-4pm Meadow creation for beginners**

Wildflowers are a beautiful way to make your garden or green space more wildlife friendly. They are essential food source for all sorts of wildlife from butterflies to house sparrows. Join us to learn how to create and manage these wonderful meadows. RSPB members £7, non-members £10

### **11 June, 1-4pm Pollinators**

Join us to learn more about why pollinators are important and learn to ID some of the butterflies and bees we find in Glasgow. RSPB members £7, non-members £10

### **7 May, 10am-4pm Wildlife photography workshop**

Join wildlife photographer Louise Greenhorn on this one day workshop and learn how to capture stunning nature and wildlife photographs. She will cover all the basics and focus on how to prepare and get the most out of a shoot, the ideal equipment set up and how best to use the light in real environments. RSPB members £35, non-members £45

### **2 July, 9-11pm Bats in Kelvingrove**

Join us to look for, and learn about, the mysterious creatures that come out at night! RSPB members £7, non-members £10

### **27 August, 1-4pm Botanical walk**

Join the RSPB on a walk to learn about the plants of Kelvingrove Park. Learn how to identify native plants through family and plant structure.

This competition was originally funded for four years and is sponsored by Glasgow Natural History Society and the University of Glasgow Institute of Biodiversity, Animal Health and Comparative Medicine. Its aims are to promote interest in Natural History and the work of SCENE (Scottish Centre for Ecology and the Natural Environment, the University's field Station at Rowardennan), linkage between the Institute and the Society and providing pictures for publicity.

During this time, participation in the competition has increased, and prizes to the tune of £800 per year have been awarded at the Society's photographic nights each February. Five years have now elapsed since the inaugural competition in 2011, and the emphasis of the competition has changed over that time, but the good news is that it has been agreed between the Institute and the Society that the competition will continue at least for the time being, with an attempt being made to increase publicity for the competition in the hope of more than the 65 entries of 2015.

Here are the winning entries from 2015's competition:



Agnieszka Wojciechowska - Loch Lomond



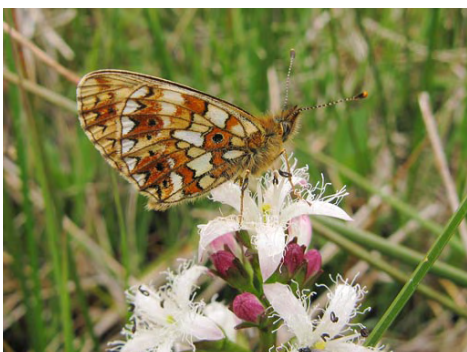
Chris Pollock - Crab



John Knowler - Oleander Hawkmoth



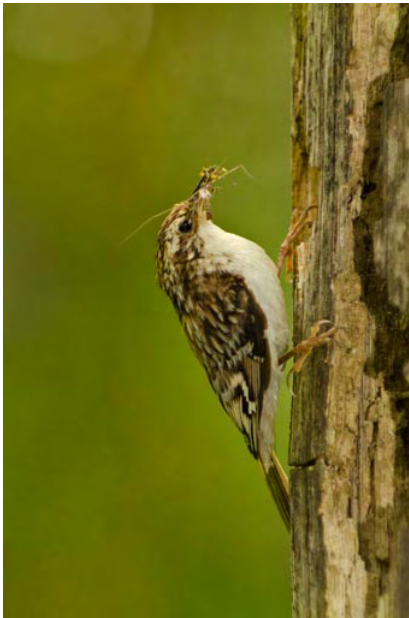
Mandy Glass - spider



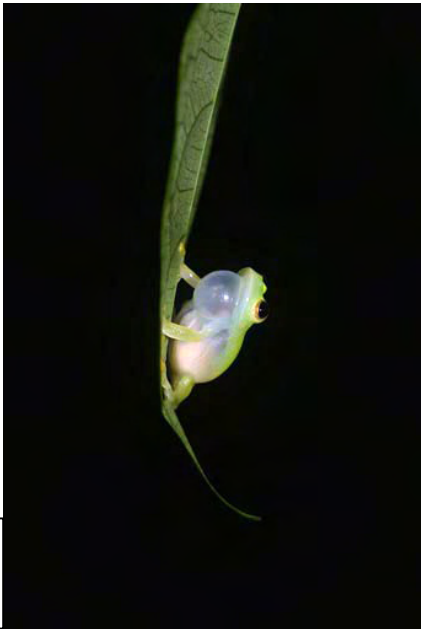
Sarah Longrigg -  
Small Pearl-  
bordered  
Fritillary

Chris McInerny -  
Banded  
Demoiselle





Paul Jerem -  
Treecreeper



Anna Andrusaite  
- Glassfrog male

**West End Festival - Kelvin in the Kibble Exhibition**

**Lyn Dunachie**

As a follow up to our conference, The Kelvin: its History and Natural History, held last year during Science Week, the Kelvin Biodiversity Network plan to hold an exhibition in the Botanic Gardens Kibble glasshouse during the first two weeks of June 2016.

Participants include GNHS, Clyde River Foundation, Friends of the River Kelvin, Trust for Conservation Volunteers and Citizen Science, RSPB, Country Park Rangers, Neil Phillips (Sustainable Energy), Friends of Glasgow's Local Nature Reserves and Tom Donald (photographs). Richard Sutcliffe has kindly offered for GNHS to use the display about the Kelvin prepared for Science Sunday in 2015.

It is planned to open the exhibition in the afternoon of Thursday 26 May and it will run until Sunday 12 June with a "Family Day" as a closing event. We hope that other Kelvin related activities will be organised and advertised during the time the exhibition runs.

The exhibition will provide an opportunity to publicise GNHS and if you can spend some time during the days that it is open, stewarding and talking to visitors in the Kibble or if you would be prepared to organise an activity around the Kelvin please contact Lyn Dunachie.

**Summer Social 2016**

**Mary Child**

This year’s summer social will take place on Tuesday 14th June and will be held at The Cathedral House Hotel, 28-32 Cathedral Square, Glasgow G4 0XA. We will be meeting there at 6.30 for 7pm. We have an upstairs room which overlooks the Glasgow Necropolis and there will be a varied three course menu which looks delicious. The cost is £25 per person. Please complete the form below and return it to Mary Child before May 31st.

A guided tour of the Necropolis will be available from 5pm, led by Ruth Johnston, Chair of the Friends of Glasgow Necropolis. Suggested donation for the tour is £5 per person. The meeting place will be the Gatehouse just inside the main Necropolis gate. Further details will be available from Mary Child.

.....

I/We wish to attend the Summer Social on Tuesday 14th June 2016

NAME/S.....

ADDRESS.....

PHONE NO.....EMAIL ADDRESS.....

Amount enclosed £.....(Cheques made out to Glasgow Natural History Society)

Please complete this form and send, along with a cheque (£25 per person) to Mary Child.